

CCRA

April 2009

Renaissance Hotel, Austin TX

REVISION DATE:
3/2/2009 fdl

BOOTH COUNT

Inventory as
of 02/25/2009

| Dimension | Qty |
|-----------|-----|
| 10'x10' | 59 |
| 10'x100' | 1 |
| 10'x20' | 1 |
| 10'x52' | 1 |
| 10'x78' | 2 |
| 10'x90' | 2 |
| 20'x35' | 1 |

BLDG. LEGEND:

 COLUMN
16x16

 COLUMN
2'

 COLUMN WITH
LITE COVER
3'

FREEMAN

DRAWING STARTED:
9/8/2008 FDL
FILE PATH:
F:\Shows\Shows_2009\04-Apr\CCRA\Floor
Plans

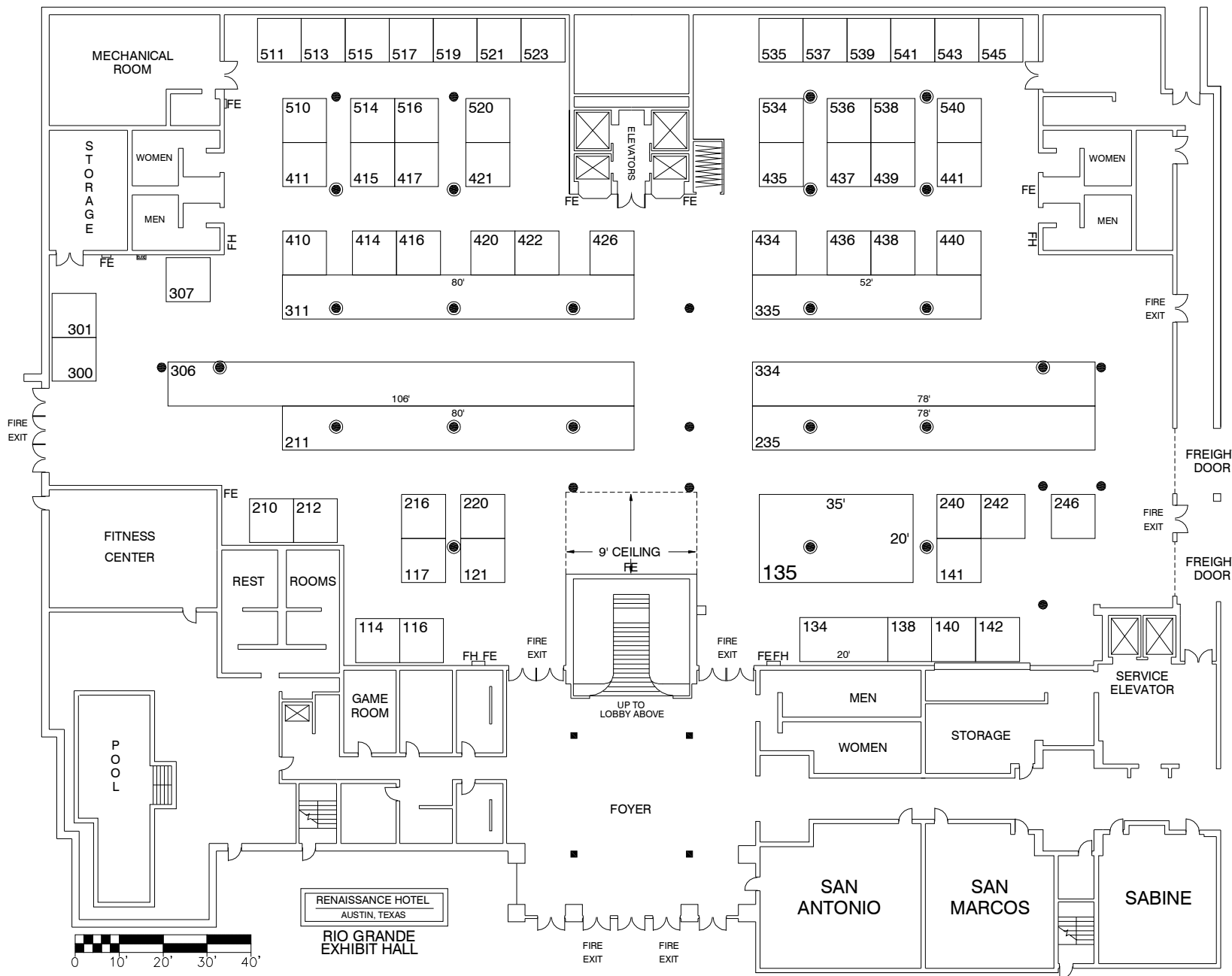
DRAWING NAME:
CCRA

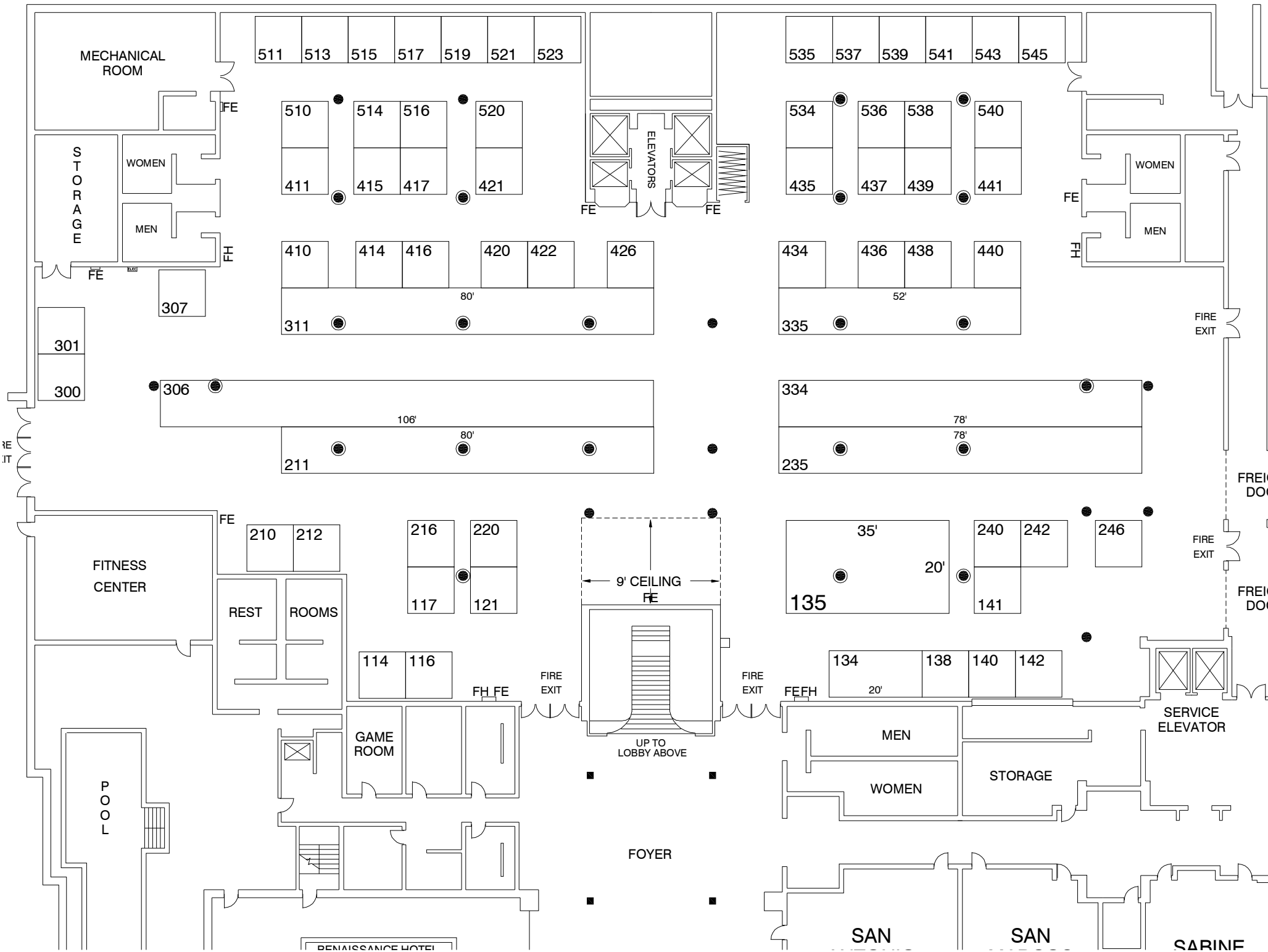
JOB NUMBER:
Job Number
ACCT. EXEC.:
DON RUBALCAVA

DISCLAIMER

EVERY EFFORT HAS BEEN MADE TO ENSURE THE ACCURACY OF ALL INFORMATION CONTAINED ON THIS FLOORPLAN. HOWEVER NO WARRANTIES, EITHER EXPRESSED OR IMPLIED ARE MADE WITH RESPECT TO THIS FLOORPLAN. IF THE LOCATION OF BUILDING COLUMNS, UTILITIES OR OTHER ARCHITECTURAL COMPONENTS OF THE FACILITY IS A CONSIDERATION IN THE CONSTRUCTION OR USAGE OF AN EXHIBIT, IT IS THE SOLE RESPONSIBILITY OF THE EXHIBITOR TO PHYSICALLY INSPECT THE FACILITY TO VERIFY ALL DIMENSIONS AND LOCATIONS.

©COPYRIGHT 2007, FREEMAN CO.
ALL RIGHTS RESERVED.





RENAISSANCE HOTEL

SAN SAN SAN